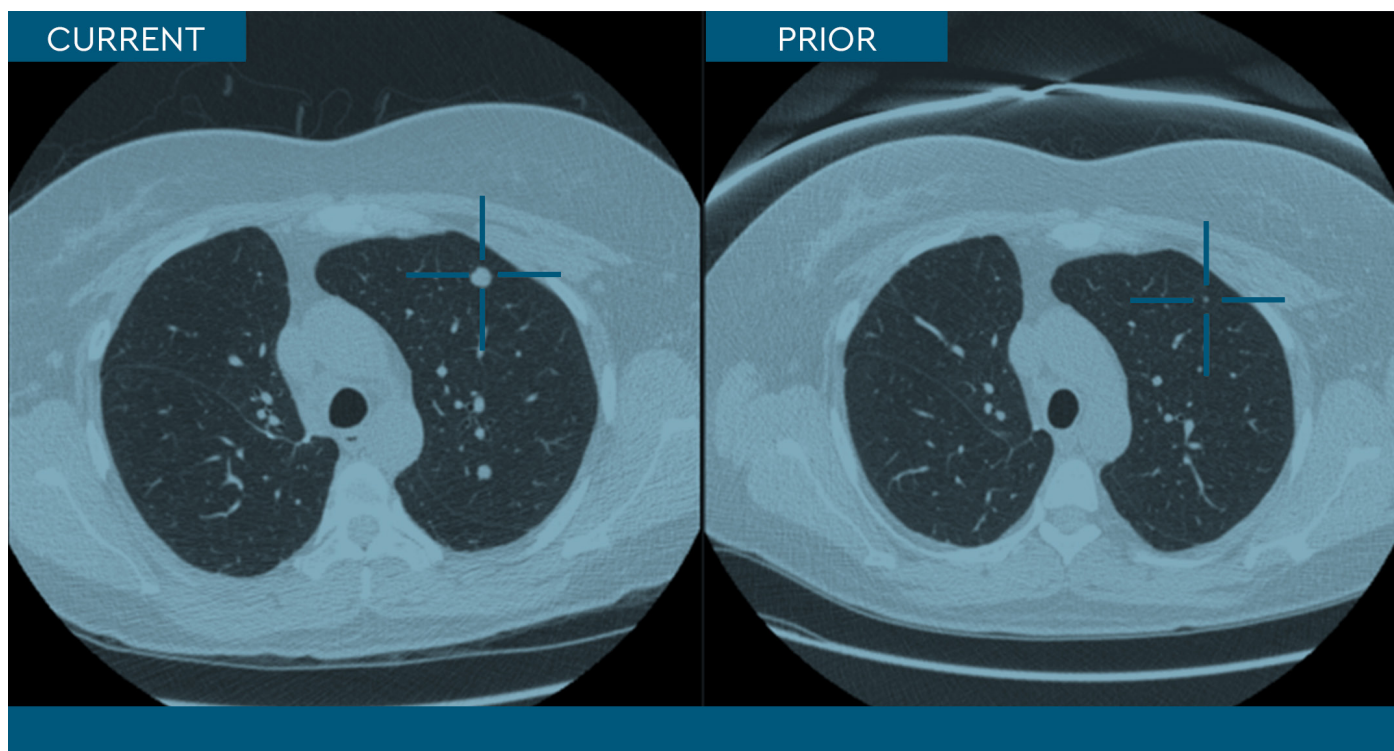




Fast and easy to use, automated image registration increases radiologist efficiency by 10–20 %, and up to 50 % for more challenging exams. It allows radiologists to quickly locate and compare an increased number of findings and model new measurements based on past exams, resulting in better reporting.



### Save time and boost efficiency

With automated image registration, radiologists see a 10–20% [1] gain in efficiency, and up to a 50% [2] increase for particularly challenging exams.

### Find more accurate measurements

Radiologists can efficiently locate and compare striking findings from past exams to model new measurements, ensuring/supporting better accuracy and reporting.

### Enhance the quality of reporting and care

Radiologist can navigate to registered prior imaging exams in a single click, plus or minus one click on the mouse wheel – typically equivalent to plus or minus one slice allowing them to easily compare more imaging time points and gain an enhanced view of disease progression for better reporting.

### Reduce Repetitive Strain Injuries (RSI)

Significantly reduces scrolling time and strain.

### Improve diagnostic confidence

Removing scrolling for radiologists frees up valuable time to evaluate, compare and interpret images, helping to improve decision making.

### Use easily and intuitively

Integrated into the PACS user interface, automated image registration occurs automatically and requires minimal training. Immediate comparison of multiple imaging studies is possible in just one click (plus or minus one click on the mouse wheel – typically equivalent to plus or minus one slice).

[1] Erickson et al. "Effect of automated image registration on radiologist interpretation." Journal of Digital Imaging. 2007 Jun; 20(2):105–13.

[2] Barish et al. "PACS-Integrated automatic deformable registration reduces lung nodule matching time in serial chest CT." SIIM 2014.

### Key features of Blackford Functionality for Intelerad

- Identifies exams for comparison studies

Automatically determines relevant earlier exams for comparison studies and looks for any previous registrations.

- Performs volumetric registration

Automatically implements volumetric registration of new exams relevant to prior exams, and stores results as new series.

- Adds enhanced 3D Cursor tool to IntelViewer user interface

Registration can be used as soon as exams are opened, and all processing is completed by the Blackford Platform before reading.

- Automates volume registration

Volume registration of current and prior imaging studies is conveniently automated.

- Overcomes differences between studies

Negates the variances that typically exist between comparison studies that have been performed on different modalities, and different vendors.

- Effective comparison

Effective for comparison of multiple exams such as lung nodules or multiple lesions.

- Single-click navigation

Instantly able to navigate to the same location across exams, modalities as well as different frames of reference – in one click (plus or minus one click on the mouse wheel – typically equivalent to plus or minus one slice).

- Location of Interest

When clicking on a location of interest in a source series, an anatomically equivalent position will be obtained in the target series by scrolling plus or minus one click on the mouse wheel – typically equivalent to plus or minus one slice.

- Multi-modality, multiple anatomies

Currently supports 80% of cross-sectional exams based on CMS data, including CT, MR and PET/CT exams and modalities for the head, chest, spine and body.

**“The ability to automatically link current and prior registered studies saves us time on every exam and the ability to localize findings in all three planes across current and prior registered examinations is a game changer when it comes to reading follow-up pulmonary nodule and oncology cases cases”**

William G. Way Jr., MD, Director of Diagnostic Imaging, Wake Radiology